

# ANSI Roller Chain Sprockets & Bushings



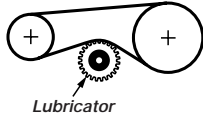
## Double-Pitch Plain Bore Steel Sprockets

With two teeth every pitch, these sprockets are the choice for driving slow- to moderate-speed conveyors. All are made of steel and can be machined. They do not include keyways or set screws. Use with ANSI double-pitch, single-strand chain. Minimum bore size is the furnished size; you can enlarge bore to the maximum bore size. For information about sprockets, see page 892.

**Additional Information:** [Click here for the length through bore as well as hub diameter for these sprockets.](#)

| No. of Teeth | For #2040 Chain, 1" Pitch |          | Each           | For #2050 Chain, 1 1/4" Pitch |      | Each     | For #2060H Chain, 1 1/2" Pitch |         | Each | For #2080H Chain, 2" Pitch |                | Each    |         |         |                |         |
|--------------|---------------------------|----------|----------------|-------------------------------|------|----------|--------------------------------|---------|------|----------------------------|----------------|---------|---------|---------|----------------|---------|
|              | Bore Size Min.            | Max.     |                | Bore Size Min.                | Max. |          | Bore Size Min.                 | Max.    |      | Bore Size Min.             | Max.           |         |         |         |                |         |
| 15           | 5/8"                      | 1 1/32"  | <b>2444K11</b> | \$11.88                       | 5/8" | 1 13/32" | <b>2444K57</b>                 | \$16.41 | 3/4" | 1 3/4"                     | <b>2444K17</b> | \$22.18 | 1"      | 2 9/32" | <b>2444K22</b> | \$35.43 |
| 17           | 5/8"                      | 1 15/16" | <b>2444K12</b> | 13.00                         | 5/8" | 1 3/4"   | <b>2444K27</b>                 | 18.75   | 3/4" | 2 3/32"                    | <b>2444K18</b> | 26.24   | 1"      | 2 3/4"  | <b>2444K23</b> | 44.70   |
| 21           | 5/8"                      | 1 25/32" | <b>2444K14</b> | 19.92                         | 3/4" | 2"       | <b>2444K58</b>                 | 26.23   | 3/4" | 2 3/4"                     | <b>2444K21</b> | 33.79   | 1"      | 2 3/4"  | <b>2444K23</b> | 66.07   |
| 23           | 5/8"                      | 2"       | <b>2444K44</b> | 24.04                         | 3/4" | 2"       | <b>2444K28</b>                 | 30.27   | 3/4" | 2 3/4"                     | <b>2444K61</b> | 37.42   | 1"      | 2 3/4"  | <b>2444K25</b> | 71.70   |
| 24           | 5/8"                      | 2 1/4"   | <b>2444K15</b> | 25.45                         | 3/4" | 2"       | <b>2444K51</b>                 | 32.71   | 3/4" | 2 3/4"                     | <b>2444K62</b> | 40.51   | 1"      | 2 3/4"  | <b>2444K26</b> | 73.19   |
| 28           | 5/8"                      | 2 1/4"   | <b>2444K45</b> | 30.27                         | 3/4" | 2"       | <b>2444K31</b>                 | 36.53   | 3/4" | 2 3/4"                     | <b>2444K63</b> | 48.70   | 1 3/16" | 3 1/4"  | <b>2444K86</b> | 81.24   |

## Roller Chain Lubricator



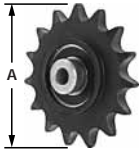
No need for sprays—this oil-impregnated, sprocket-shaped lubricator mounts to roller chain and rotates to deliver constant, uniform lubrication. And not only does it lubricate, it maintains chain tension and helps eliminate oil and grease contamination. Just mount it on the slack or return side of the chain; it has a 1/2" bore. Made of black polymer. Temperature range is 10° to 180° F.

**To Order:** Please specify chain pitch: ANSI No. 40, 50, 60, or 80. **1444K1** ..... Each \$64.17

## Nylon Idler Sprockets with Ball Bearings

The bearings in these sprockets allow them to rotate freely while controlling chain slack to maintain proper tension. Sprockets are lightweight glass-reinforced nylon, which offers tremendous wear and corrosion resistance. In addition, they're quieter than steel and don't require lubrication.

Sprockets are precision molded for excellent concentricity. Each includes an ABEC-1 rated steel ball bearing.



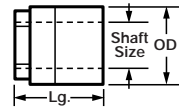
| For ANSI Chain Size | Pitch | No. of Teeth | 5/8" Bore             | 3/4" Bore              |
|---------------------|-------|--------------|-----------------------|------------------------|
|                     |       | (A)          | Each                  | Each                   |
| 40                  | 1/2"  | 17           | 3" <b>8255K11</b>     | \$10.25 <b>8255K31</b> |
| 50                  | 5/8"  | 15           | 3 1/4" <b>8255K12</b> | 10.73 <b>8255K32</b>   |
| 60                  | 3/4"  | 13           | 3 1/2" <b>8255K13</b> | 11.70 <b>8255K33</b>   |
| 80                  | 1"    | 12           | 4 1/2" <b>8255K14</b> | 13.18 <b>8255K34</b>   |

## Quick-Mount Keyless Bushings

Since there are no keys, cap screws, or other components to slow you down, you can torque up one of these bushings in just seconds. Match bushing OD to bore of your sprocket, pulley, or gear.

Each bushing has inner and outer sleeves. As you tighten the collar nut, the inner sleeve contracts onto the shaft while the outer sleeve expands to hold your component. Bushings accommodate shafts that are slightly out of round. They're quick and easy to install and remove.

**Stainless steel bushings** are made of Type 303 stainless steel.



| Inch Sizes     |        |        |                       | Metric Sizes   |                    |       |                |                       |      |                       |         |
|----------------|--------|--------|-----------------------|----------------|--------------------|-------|----------------|-----------------------|------|-----------------------|---------|
| For Shaft Size | OD     | Lg.    | Steel                 |                | For Shaft Size, mm | OD    | Lg., mm        | Steel                 |      | Stainless Steel       |         |
|                |        |        | Max. Torque, in.-lbs. | Each           |                    |       |                | Max. Torque, in.-lbs. | Each | Max. Torque, in.-lbs. | Each    |
| 3/16"          | 5/8"   | 3/4"   | 100                   | <b>5926K11</b> | \$26.23            | 30    | <b>2308K11</b> | \$37.68               | 35   | <b>2324K11</b>        | \$37.68 |
| 1/4"           | 5/8"   | 3/4"   | 150                   | <b>5926K12</b> | 26.23              | 45    | <b>2308K12</b> | 37.68                 | 44   | <b>2324K12</b>        | 37.68   |
| 5/16"          | 3/4"   | 1/8"   | 200                   | <b>5926K13</b> | 27.74              | 60    | <b>2308K13</b> | 39.85                 | 53   | <b>2324K13</b>        | 37.68   |
| 3/8"           | 3/4"   | 1/8"   | 250                   | <b>5926K14</b> | 27.74              | 75    | <b>2308K14</b> | 39.85                 | 61   | <b>2324K14</b>        | 39.85   |
| 7/16"          | 7/8"   | 1"     | 300                   | <b>5926K15</b> | 30.01              | 90    | <b>2308K15</b> | 43.11                 | 70   | <b>2324K15</b>        | 39.85   |
| 1/2"           | 7/8"   | 1"     | 350                   | <b>5926K16</b> | 30.01              | 105   | <b>2308K16</b> | 43.11                 | 79   | <b>2324K16</b>        | 43.11   |
| 9/16"          | 1"     | 1 1/8" | 400                   | <b>5926K17</b> | 31.02              | 120   | <b>2308K17</b> | 44.55                 | 88   | <b>2324K17</b>        | 43.11   |
| 5/8"           | 1"     | 1 1/8" | 450                   | <b>5926K18</b> | 31.02              | 135   | <b>2308K18</b> | 44.55                 | 106  | <b>2324K18</b>        | 43.11   |
| 5/8"           | 1 1/2" | 1 1/2" | 1,750                 | <b>5926K42</b> | 39.36              | 525   | <b>2308K21</b> | 59.04                 | 115  | <b>2324K19</b>        | 44.55   |
| 1 1/16"        | 1 1/2" | 1 1/2" | 2,000                 | <b>5926K19</b> | 41.11              | 600   | <b>2308K22</b> | 59.04                 | 123  | <b>2324K21</b>        | 44.55   |
| 3/4"           | 1 1/4" | 1 3/8" | 1,500                 | <b>5926K41</b> | 29.70              | 450   | <b>2308K19</b> | 44.55                 | 122  | <b>2324K20</b>        | 59.04   |
| 3/4"           | 1 1/2" | 1 1/2" | 2,500                 | <b>5926K2</b>  | 41.11              | 750   | <b>2308K23</b> | 59.04                 | 132  | <b>2324K22</b>        | 44.55   |
| 1 3/16"        | 1 3/4" | 1 7/8" | 2,600                 | <b>5926K43</b> | 47.09              | 780   | <b>2308K24</b> | 70.64                 | 152  | <b>2324K25</b>        | 59.04   |
| 7/8"           | 1 3/4" | 1 7/8" | 2,800                 | <b>5926K22</b> | 44.27              | 840   | <b>2308K25</b> | 70.64                 | 177  | <b>2324K23</b>        | 44.55   |
| 1 5/16"        | 1 3/4" | 1 7/8" | 3,100                 | <b>5926K23</b> | 44.27              | 930   | <b>2308K26</b> | 70.64                 | 194  | <b>2324K26</b>        | 59.04   |
| 1"             | 1 3/4" | 1 7/8" | 3,500                 | <b>5926K24</b> | 44.27              | 1,050 | <b>2308K27</b> | 70.64                 | 208  | <b>2324K27</b>        | 59.04   |
| 1 1/16"        | 2"     | 2 1/4" | 4,000                 | <b>5926K44</b> | 61.11              | 1,200 | <b>2308K28</b> | 91.64                 | 252  | <b>2324K28</b>        | 59.04   |
| 1 1/8"         | 2"     | 2 1/4" | 4,600                 | <b>5926K25</b> | 57.43              | 1,380 | <b>2308K29</b> | 91.64                 | 270  | <b>2324K29</b>        | 70.64   |
| 1 3/16"        | 2"     | 2 1/4" | 5,200                 | <b>5926K45</b> | 61.11              | 1,560 | <b>2308K31</b> | 91.64                 | 288  | <b>2324K31</b>        | 70.64   |
| 1 1/4"         | 2"     | 2 1/4" | 6,000                 | <b>5926K26</b> | 57.43              | 1,800 | <b>2308K32</b> | 91.64                 | 306  | <b>2324K32</b>        | 70.64   |
| 1 5/16"        | 2 3/8" | 2 3/4" | 6,200                 | <b>5926K46</b> | 75.34              | 1,860 | <b>2308K33</b> | 113.02                | 324  | <b>2324K33</b>        | 70.64   |
| 1 3/8"         | 2 3/8" | 2 3/4" | 6,400                 | <b>5926K27</b> | 70.82              | 1,920 | <b>2308K34</b> | 113.02                | 342  | <b>2324K34</b>        | 91.64   |
| 1 7/16"        | 2 3/8" | 2 3/4" | 6,700                 | <b>5926K47</b> | 75.34              | 2,010 | <b>2308K35</b> | 113.02                | 360  | <b>2324K35</b>        | 91.64   |
| 1 1/2"         | 2 3/8" | 2 3/4" | 7,000                 | <b>5926K28</b> | 70.82              | 2,100 | <b>2308K36</b> | 113.02                | 378  | <b>2324K36</b>        | 91.64   |
| 1 9/16"        | 2 5/8" | 3 1/8" | 8,000                 | <b>5926K48</b> | 93.70              | 2,400 | <b>2308K37</b> | 140.55                | 408  | <b>2324K37</b>        | 113.02  |
| 1 5/8"         | 2 5/8" | 3 1/8" | 8,500                 | <b>5926K29</b> | 88.08              | 2,550 | <b>2308K38</b> | 140.55                | 438  | <b>2324K38</b>        | 113.02  |
| 1 11/16"       | 2 5/8" | 3 1/8" | 9,250                 | <b>5926K49</b> | 93.70              | 2,775 | <b>2308K39</b> | 140.55                | 468  | <b>2324K39</b>        | 113.02  |
| 1 3/4"         | 2 5/8" | 3 1/8" | 10,000                | <b>5926K3</b>  | 88.08              | 3,000 | <b>2308K41</b> | 140.55                | 504  | <b>2324K41</b>        | 113.02  |
| 1 13/16"       | 2 7/8" | 3 1/8" | 11,000                | <b>5926K71</b> | 115.19             | 3,300 | <b>2308K42</b> | 172.79                | 540  | <b>2324K42</b>        | 140.55  |
| 1 7/8"         | 2 7/8" | 3 1/8" | 11,750                | <b>5926K31</b> | 104.11             | 3,525 | <b>2308K43</b> | 172.79                | 576  | <b>2324K43</b>        | 140.55  |
| 1 5/8"         | 2 7/8" | 3 1/8" | 12,750                | <b>5926K72</b> | 115.19             | 3,825 | <b>2308K44</b> | 172.79                | 612  | <b>2324K44</b>        | 172.79  |
| 2"             | 2 7/8" | 3 1/8" | 14,000                | <b>5926K32</b> | 104.11             | 4,200 | <b>2308K45</b> | 172.79                | 648  | <b>2324K45</b>        | 172.79  |
| 2 1/4"         | 3 1/8" | 3 3/4" | 15,000                | <b>5926K73</b> | 190.04             | 4,500 | <b>2308K46</b> | 285.09                | 684  | <b>2324K46</b>        | 172.79  |
| 2 1/2"         | 3 3/8" | 3 7/8" | 16,000                | <b>5926K74</b> | 212.02             | 4,800 | <b>2308K47</b> | 318.04                | 720  | <b>2324K47</b>        | 285.09  |
| 2 3/4"         | 3 3/8" | 3 7/8" | 17,000                |                |                    |       |                |                       | 756  | <b>2324K48</b>        | 318.04  |